



November 2023

LBFE Boston's Quarterly News

Hello!

The holiday season has arrived and LBFE Boston is BUZZING! Tomorrow we will take to the Hyatt Boston Harbor to host over 50 older adults and volunteers for Thanksgiving dinner. Guests will enjoy world class views, a buffet lunch, many varieties of pies, music, dancing, trivia, and companionship. As we move into December, our Board of Directors will gather to assemble and deliver holiday packages, corporate volunteer groups will make cards and host supply drives, and our students and staff will assemble and deliver holiday gifts to all of our program participants.

The holiday season is also the season of giving. LBFE Boston receives more than half of our annual donations between October and December - and your generosity during the holiday season fuels our programs all year long. While it is a busy time of year, we always take the time to reflect on the power and kindness of this community. We are humbled and honored that you all take the time to think of LBFE and your older neighbors during your own busy holiday schedule. Because of your thoughtfulness, we are able to provide programs to relieve isolation and loneliness during the holidays, and all year round.



On a personal note, the holidays are always a memorable time as a staff member of LBFE Boston. Spending Thanksgiving with older adults, volunteers, co-workers, the Hyatt team, and our DJ Craig Sutton is a joy. I will be sure to relish during my last holiday season at LBFE Boston. Thank you for being a part of it.

Warmly,

Nikki Shults
Executive Director

LBFE In the News

LBFE was thrilled to welcome WBZ's Courtney Cole to our Tech Cafe at Peterborough Senior Center in the Fenway. Watch to get a peek inside our intergenerational CitySites program!

[Watch Here](#)



From the Field

In October, Program Director Cynthia Wilkerson co-presented at the 2023 IARSLCE (International Association for Research on Service-Learning and Community Engagement) Conference at Tulane University. The presentation topic was, “Enacting a Co-creative Service-Learning Course: Community and Faculty Perspectives from an Intergenerational Oral History Project.” The presentation discussed the oral history project that LBFE Boston and two writing courses at Northeastern University are co-creating with community partners and was co-presented with Emily Avery-Miller and Julia Garrett, both from Northeastern. LBFE Boston’s partnership with Community Engaged Teaching and Research at Northeastern supports student engagement for both CitySites and Digital Dividends.

[Learn More](#)

Holidays at LBFE

The holiday season has arrived! Our students and older adults have been celebrating with Halloween and Thanksgiving themed activities including making cork pumpkin decorations, gratitude turkeys, and using Google to find Thanksgiving recipes.



Same Building, New Office

Our team is growing! With our recent staff additions (and more to come) we outgrew



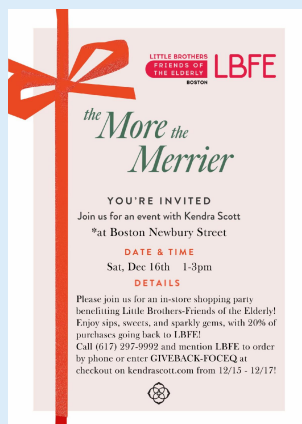
our office space. Please update your records accordingly to:

LBFE Boston
2 Park Plaza Ste 400
Boston, MA 02116

Program Updates

LBFE Boston is delighted to be partnering with the Rabbi Abraham Halbfinger and Charlesview Community Fund this year to continue our Creative Connections program. We are hosting instructor-led creative arts programs in public/affordable senior housing. For those who attended Friends on the Harbor - our friend Aaron Myers is back dancing, this time with our friends at Codman Apartments!

[Learn More](#)



Shop for a Cause

When you're out holiday shopping this year be sure to stop by Kendra Scott on Newbury St on Sat December 16th between 1-3pm or shop online Dec 15-17 and use checkout code GIVEBACK-FOCEQ. A percentage of all proceeds will benefit LBFE Boston's programs to relieve isolation and loneliness among older adults.

[Learn More](#)

Visit Our Website

Connect with us

